

**TÊTES DE GARGOUILLE  
N°290 ET 297 - PROFIL A ET T**



**LIEU D'INSTALLATION :**

Pour bordures de trottoirs (250kN)

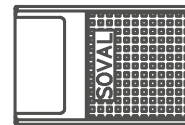
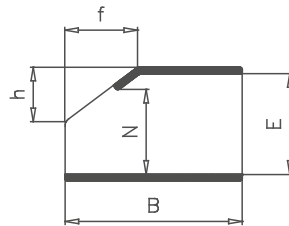
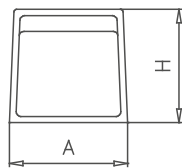
**MATIÈRE & REVÊTEMENT :**

Fonte GS 420-5.  
Peinture hydrosoluble noire.

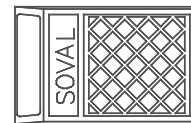
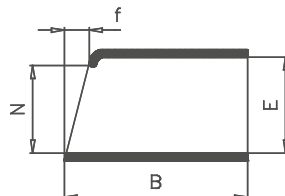
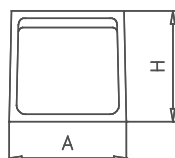
**REMARQUE :**

La gargouille N°297 peut s'assembler  
avec les tubes allonge N°135 et N°136

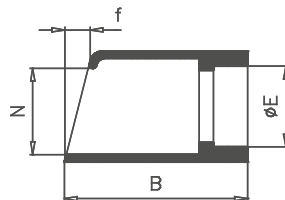
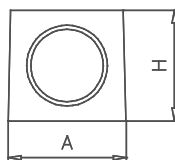
**N°290A**



**N°290T**



**N°297**



Code article	N° et profil	A	B	H	f	N	E	h	Surface d'avalement	Masse
		mm							dm <sup>2</sup>	Kg
7881	290 A	130	195	125	80	90	110	60	1	4,1
7882	290 T	138	215	130	30	102	110	/	1,1	6
7883	297	138	215	130	30	102	95	/	1,1	8