

1/2 | **ROTATABLE FLANGED FITTINGS
DUCKFOOT 90° BEND**



SPECIFICATIONS :

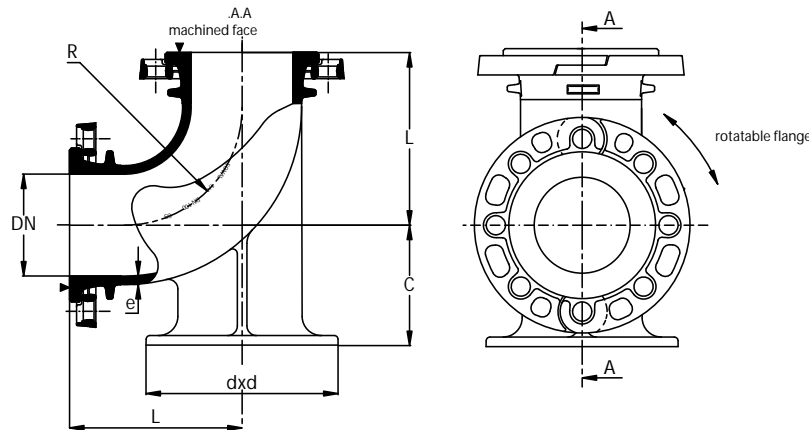
Norm : **EN 545**

MATERIAL & COATING :

Spheroidal Cast Iron GJS 420-5.
Reinforced epoxy paint RAL 5005 (250µm
mini according to EN 14901) food-grade.

ASSEMBLY :

Flat gaskets available upon request.
Bolt tightening torque depends on gasket
type and nominal pressure.



Reference	DN	Length	Radius	Thickness	Duckfoot		Weight with flanges	Nominal pressure				
		L	R	e	c	dxd		PN 10	PN 16	PN 25	PN 40	
		mm						Kg	bar			
9963	60	160	105	8,5	100	160	11,0	x	x	*	*	
/	65	160	105	8,5	100	160	11,0	x	x	*	*	
38	80	165	120	8,5	110	180	16,0	x	x	x	x	
40	100	180	125	8,5	125	200	23,0	x	x	*	*	
42	125	200	140	9,0	140	200	26,0	x	x	*	*	
44	150	220	160	9,5	160	250	34,0	x	x	*	*	
47	200	260	195	9,5	190	300	45,0	x	*	*		
49	250	350	290	12,0	210	350	96,0	x	*	*		
51	300	400	335	13,0	240	400	140,0	x	*	*		
*	350**	450	380	16,5	270	450	200	x	*			
*	400**	500	425	17,5	300	500	300	x	*			
*	450**	550	470	19,0	330	550	355	x	*			
*	500**	600	515	20,0	360	600	390	x	*			
*	700**	800	695	24,5	515	800	1000	x	*			

* consult us
** fixed flanges

2/2 | **ROTATABLE FLANGED FITTINGS
DUCKFOOT 90° BEND**



**ASSEMBLY OF THE
FLANGES**

The movable flange segments of our fittings are assembled using steel rings for greater resilience.



**REINFORCED EPOXY
COATING**

Epoxy paint coating RAL 5005 and food-grade. Reinforced thickness of **250 microns** and **ACS** approval.

All dimensions, weights and norms are given for information only. SOVAL reserves the right to modify the specifications of products given in the present document.

Related products

