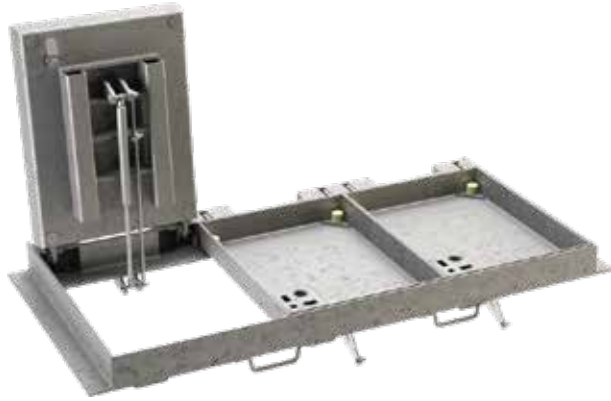


**RECESSED INFILL ACCESS COVER  
LTRVAA - 400 KN SLOW TRAFIC FLOW  
LAYER HEIGHT 80 MM**



**PLACE OF USE:**

**400 kN Slow traffic flow:** (including pedestrian streets), hard shoulders and parking areas, for all types of road vehicles.

**SPECIFICATIONS:**

Loading: **400 kN**  
Layer height: **80 mm**  
Locking: ¼ turn lock H Ø22 Stainless Steel

**MATERIAL & COATING:**

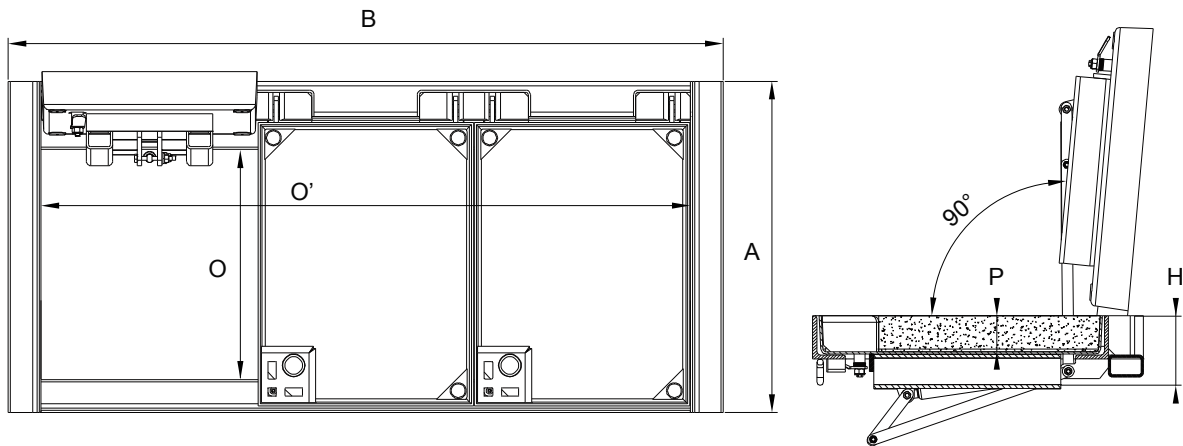
**Hatch cover & frame:**  
Steel hot-dip galvanized

**REMARKS:**

Gas strut assist lift  
Delivered without concrete  
Tray equipped with 4 no EPDM soundproofing pads (interlocked and glued).

**OPTIONS:**

Other ¼ turn lock head on request.  
Fall safety equipment.  
Handling tools.



Ref.	Description	Lay-out	Clear opening O x O'	A*	B*	H*	P	Total weight
				mm				Kg
31583	L1TVAA-R80		528 x 498	759	648	160	80	75
40865	L2TVAA-R80		394 x 1187	514	1497	150	80	122
33010	L3TVAA-R80		528 x 1490	759	1640	160	80	181
31584	1/2 L4TVAA-R80		528 x 993	759	1143	160	80	127
Weight / Lid (Kg)								40

\*External frame measures.

All dimensions, weights and norms are given for information only. SOVAL reserves the right to modify the specifications of products given in the present document.