

1/2

**MULTI-LEAF ACCESS COVER
2xKTVAA - 250 KN
WITH MONOBLOC FRAME**



SPECIFICATIONS:

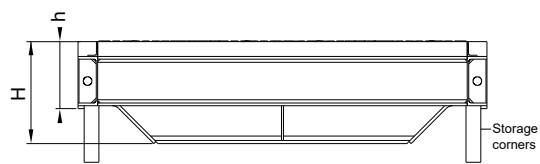
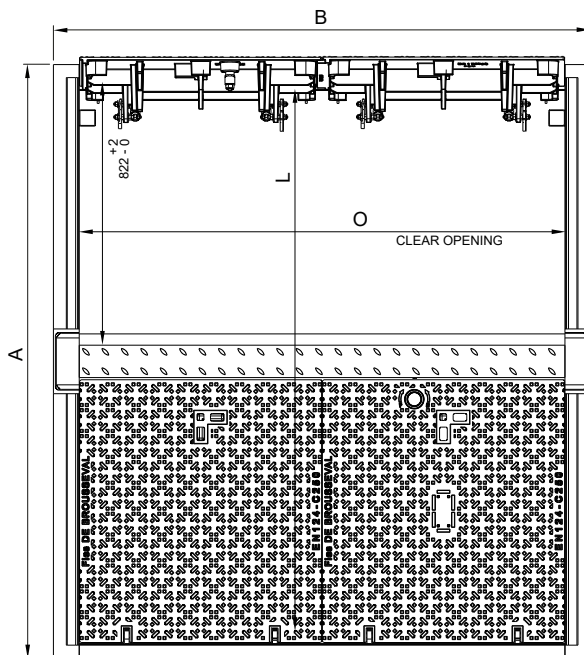
Loading: **250 kN**
Central removable beam
 Locking: ¼ turn lock H Ø22 Stainless Steel

MATERIAL & COATING :

Hatch cover: Spheroidal cast iron
 EN-GJS-500-7. Water based black paint
Hatch frame: Steel hot-dip galvanized
Hardware: Stainless steel / cast iron

OPTIONS:

Special lock: burglar-proof SAE
 Custom badging & logo
 Fall safety equipment



Code	Description	Lay-out	Clear opening	A	B	H	h	Weight	
								Beam	Total
				mm				Kg	
42019	2xK2TVAA		1500 x 1674	1834	1661	414	272	116	636
/	2xK3TVAA		2250 x 1674	1834	2410	414	272	173	898
Weight / Lid (Kg)								71	

All dimensions, weights and norms are given for information only. SOVAL reserves the right to modify the specifications of products given in the present document.

2/2

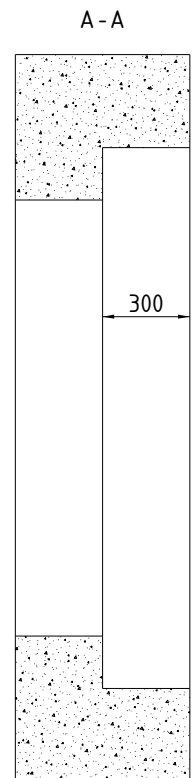
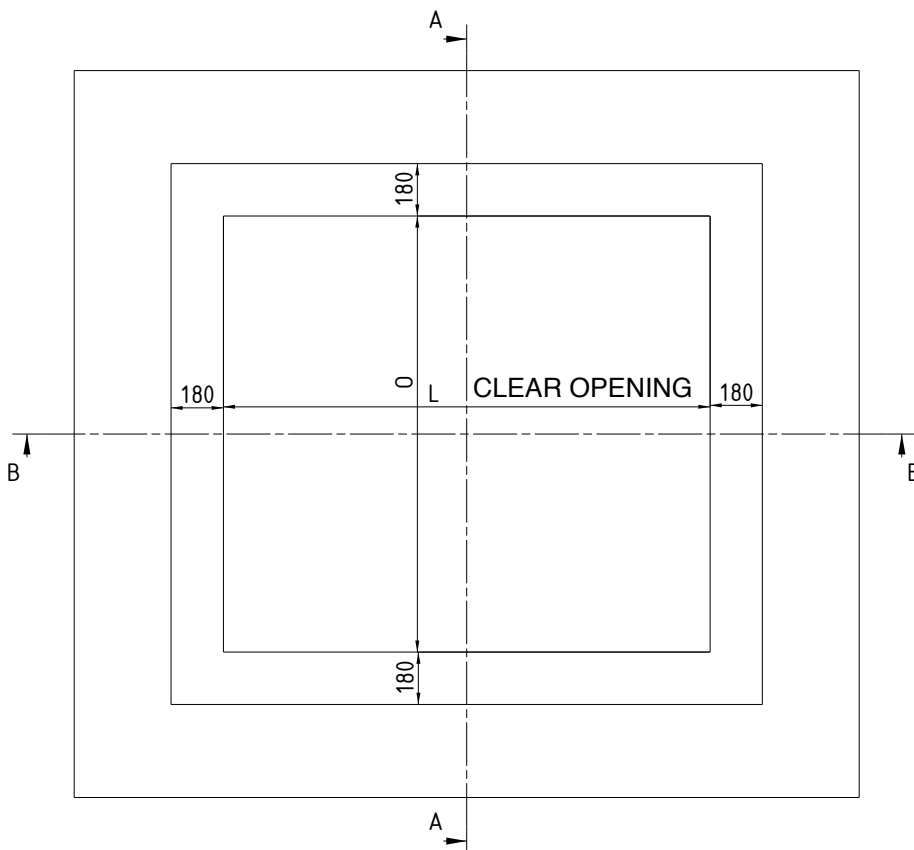
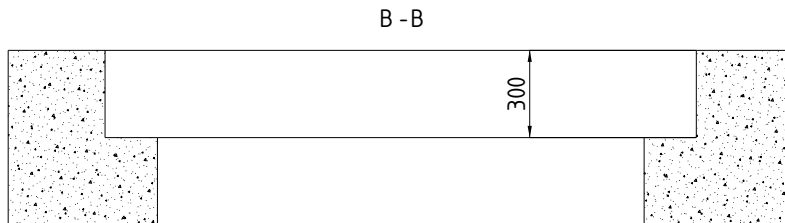
**MULTI-LEAF ACCESS COVER
2xKTVAA - 250 KN
WITH MONOBLOC FRAME**

REMARKS:

Gas strut assist lift
Safety blocking to prevent accidental cover closure, activated automatically at the opening of the cover.
Cut off the storage corners before sealing and concrete pouring.

CONCRETE FORMWORK:

Description	Lay-out	O	L
		mm	
2xK2TVAA		1500	1674
2xK3TVAA		2250	1674



All dimensions, weights and norms are given for information only. SOVAL reserves the right to modify the specifications of products given in the present document.